

Local Organization

Fernanda Saraiva , IPQ
 Fátima Marques , IPQ
 Olivier Pellegrino , IPQ
 Carlos Pires , IPQ
 Liliana Eusébio , IPQ

Scientific Committee

Sten Bergstrand, SP
 Steven van den Berg, VSL
 Olivier Pellegrino, IPQ
 Florian Pollinger, PTB
 Markku Poutanen, FGI
 Fernanda Saraiva, IPQ
 Jean-Pierre Wallerand, LNE-CNAM

Participation is free

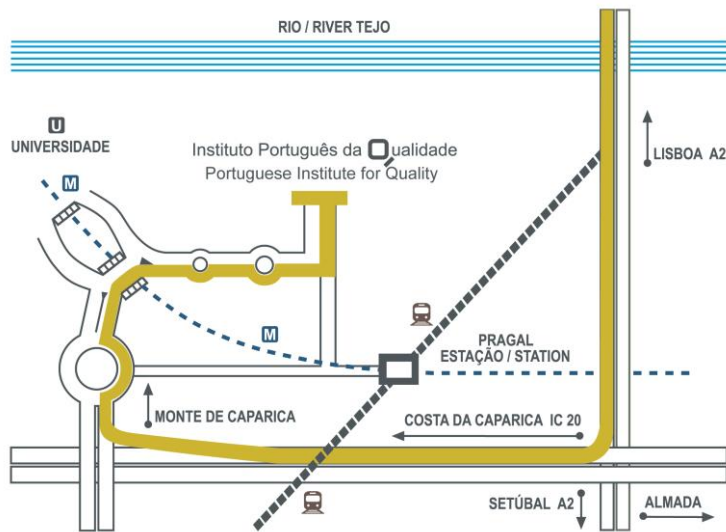
Please register by email to: eventos@ipq.pt till 1st November 2014 with the following information:

Name/ Institution/ Address/ Zip Code/ Phone/ Fax/ E-mail

Contacts Fernanda Saraiva | fsaraiva@ipq.pt | (+351) 21 294 81 60
 Sara Neves | sneves@ipq.pt | (+351) 21 294 81 26

Location, IPQ

Rua António Gião, 2 | 2829-513 Caparica, PORTUGAL
 GPS 38°40'09,088"N | 9°11'10,355"W (with parking)



1st Workshop Metrology for Long Distance Surveying

21st November 2014 | 9:00 – 18:00

Portuguese Institute for Quality, Caparica
 PORTUGAL



The accurate measurement of distances of up to kilometres is the basis of modern surveying and geodesy. A number of most critical tasks, however, like

- sensitive surveillance networks at critical sites
- local ties at geodetic fundamental stations
- high-precision sub-surface surveying work

require measurement uncertainties of typically 1 mm or better for distances of more than several hundred meters in uncontrolled environments – unachievable with current state of the art instrumentation, neither with optical nor with GNSS-based distance metrology.

To respond to this need for improvement in measurement technology, EURAMET and the EU funded the joint research project (JRP) SIB60 “Metrology for long distance surveying” within the European Metrology Research Programme (EMRP). This project started in July 2013 and unites metrologists, surveyors and geodesists from 15 European research institutions.

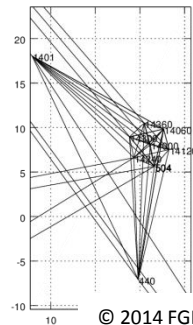
The JRP-Consortium would like to invite interested parties from surveying, geodesy, science and application to discuss the first results of this project and to share conclusions.



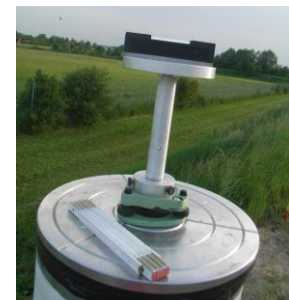
© 2014 LNE-CNAM



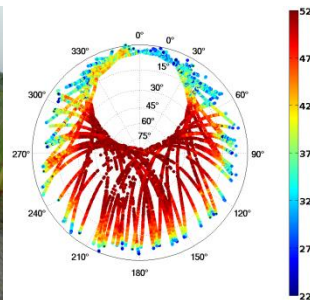
© 2014 PTB



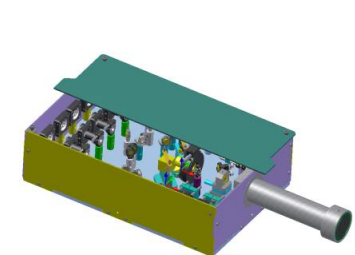
© 2014 FGI



© 2014 University of Bonn



© 2014 PTB



© 2014 PTB

The workshop will cover and is open to external contributions related to the following topics:

I. Traceable electronic distance meters in air
– towards novel standards for baseline calibration

II. Frequency-comb based distance metrology
– fundamental technology for future application

III. GNSS-based distance metrology
– understanding uncertainty contributions

IV. Challenges for distance metrology in surveying

Short abstracts of contributions (max. 400 words) can be submitted till

October 15th, 2014

by email to eventos@ipq.pt

Templates are available under www.emrp-surveying.eu